

## FROM THE EDITOR

Well, what a year! The lockdown should be just about finishing when you get this. Next year looks more hopeful ; may we soon be able to socialise and have more village events, so those of you new to the village can get to know everyone else.



Thanks very much to Rita H for her memories of living here, which conclude with the May Queen Coronation in this issue. Having an idea of what it was like here makes a difference to the rest of us.

The cover photo is of Wappenham churchyard by me. Any paintings or photos for future issues are welcome.

If you want to contribute to the spring 2021 newsletter, the copy deadline is **February 10<sup>th</sup>**. Please drop off contributions to me or email them to me via [parishclerk@wappenham.net](mailto:parishclerk@wappenham.net). Best wishes for a happy, healthy Christmas and New Year!

Jane H

## WIZ

Wiz is the Wappenham email contact group run by Clive Watt. It lets you know of events, roadworks, things for sale etc. To join, send an email via [parishclerk@wappenham.net](mailto:parishclerk@wappenham.net).

## WAPPENHAM VILLAGE WEBSITE



If you would like to add something to the website, such as photos, events, articles, news items, your business details, stories, and so forth, please send the information to [parishclerk@wappenham.net](mailto:parishclerk@wappenham.net). The website is at <http://www.wappenham.net>

There is also a Wappenham Facebook page.

## NOTICES

**A warm welcome** to Marisa, Vincente and Ervena C, who have moved from Crieff, Perthshire to the High Street. We hope you enjoy living in the village.



## COMMUNITY BUS SERVICE DEVELOPS

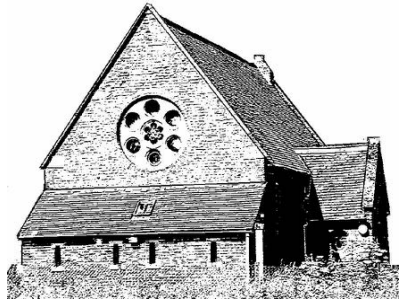
The pre-bookable bus service, Ability CIC, is going strong. The shopping trips were replaced in the lockdown by fortnightly trips to Brackley Waitrose and Tesco's. When lockdown finishes, there will be more local trips to town centres. Social distancing is achieved by limiting passenger numbers and spacing out seating, with masks being used. Contact Ability for more details of these journeys. The more people in Wappenham use the bus, the more frequent and relevant the journeys will be, so do join in if this is of use to you. It's free if you have a bus pass.

For more information, go to <https://abilitycic.org.uk/> and register, or ring 07799 522097.

Jane H

## VILLAGE HALL NEWS

As we enter a new phase of lockdown, the village hall committee continues to focus on improving the fabric of the hall so that, hopefully, when life returns to normal we will all be able to enjoy a much improved village facility. Nick Bayliss has promised faithfully to install the rose window this month. He has been struggling to catch up with a backlog of work since the previous lockdown but I think we may have finally reached the top of his 'to do' list.



Progress continues with the shed and grant application forms have been submitted to SNC for financial help with the renovation of the roof. So we'll just keep our fingers crossed that we're successful.

Many thanks to everyone who contributed to the Tote: your support really does make a difference, particularly at the moment, as we are unable to hire out the building, yet the bills continue to roll in regardless.

Unfortunately we are unable to organise the very popular over 70's Christmas lunch at The New Inn this year. Thanks to the generosity of the Beer Festival committee however, we are still able to offer an alternative, which should be arriving to our worthy recipients midway through December.

That only leaves me to wish you a very happy and healthy Christmas and New Year.

Jenny S– Village Hall Committee Secretary

## PARISH COUNCIL NEWS

Dear All

It's Sunday morning in mid-November as I settle down in front of my computer to write this snippet for the winter edition of our Village Newsletter. I have slipped back into my old ways as the deadline from Jane, our wonderful editor, has long since passed. *[Flattery will get you nowhere... Ed.]*



I am racking my brain as to what to talk to you about this time so I suspect this may be a noticeably short piece from me. I will however pat myself on the back from my clairvoyance skills – I recall in my last note to you all that I said “*it doesn't look like we will be clear of this pandemic for a long time*” and it appears I might have been right. We are (as I type) in ‘Lockdown 2.0’, daily cases as reported on the news are mind boggling while hospital admissions and deaths are also rising rapidly. I just hope this second lockdown, albeit not as restrictive as the first, will be enough to get the ‘R’ rate well below 1. Cath (my wife) gives me a UK update of cases per 100,000 most evenings based on where we have children and close relatives – I suspect this is something many of you do also as we try and gauge the risk our loved ones may be enduring.

If I am honest the focus for many of us will be Christmas. What will Christmas be like this year? Will we be able to meet family and loved ones? How will we cope if our cherished traditions cannot be upheld? I hope that Christmas will be as close to normal as possible but I fear we may all be starting some new traditions this year as we cope and manage around whatever

restrictions will be in place on the 25<sup>th</sup> December. Please stay safe and well.

So, I hear you ask, what has been happening around the village and in the Parish? Not a great deal really! Many of the activities and events that would be taking place have not happened due to coronavirus restrictions, so it has been sadly quiet. Our PC meetings are still held on Zoom with a distinct lack of attendees other than your Parish Councillors and our hard-working Clerk Liz. It would be nice to see some other faces staring back at me out of my computer screen if some additional parishioners would like to join a meeting, if only to see what we do on your behalf. Our next meeting is Wednesday 16<sup>th</sup> December @ 7.30pm.....go on, put it in your diary!!!

A quick planning update. We have had two applications to discuss. The first was vehicle access and parking with electric charging point for 12 High Street, which was supported and the second being the 'Appeal' against the SNC decision not to grant Certificate of Lawfulness for Lawful implementation of planning permission at Poplars Farm. The PC submitted the same comments as it had done for the original application some months prior.

Sticking with planning, the PC submitted a response to the SNC Landscape Character Assessment and, more worryingly, the 'Planning for the Future & Proposed reforms to the planning system' still rumbles on. I am not a Luddite and I know things must change and I also know that the current planning systems is arduous, cumbersome and downright slow, BUT the last thing I want to see is potentially complete disregard for any type of planning control and the unrestrained developments that may result. I hope we reach a realistic compromise between the two current offerings where controls are still

relevant, but the process is significantly more streamlined and efficient.

One last formal thing from me, and it is that two-word nemesis – **DOG POO**. If you do brave the worsening weather and get your wellies on to plodge through the mud with your faithful hounds, please remember to take your poo bags and clear up after your dogs – thank you.

Finally, I have the joyous task of wishing you and your loved ones a very happy Christmas and may 2021 be better for us all than 2020!!

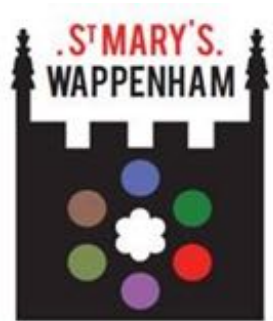
Paul F  
Wappenham Parish Council



## **CHURCH NEWS**

### **News from the Rectory**

So, this is my first contribution to the Wappenham Newsletter – and hopefully the first of many. Tess, my Briard dog and I been resident in the Rectory since 24<sup>th</sup> August, and although renovation work is still going on around me, hopefully all the work will be completed by the winter!



Before moving here to be Rector of the Astwell Benefice, I was Rector of the South Cleley Benefice, which is based around Potterspury, in the south of Northamptonshire. I was there for eight years, so I have a fair amount of experience working and living in a rural area with several parishes to care for. Before then, I trained and worked as a Curate in the St Albans Diocese,

but my roots are in the Midlands, as I was born in Coventry and lived in Braunston until I was 10, then my family moved to Hertfordshire for my Dad's work at British Aerospace.

I am really pleased to be here and very much looking forward to meeting you all at some point, although this is looking to be increasingly difficult short term with the new lockdown regulations. However, I am a keen walker, and if you would like to join me for a socially-distanced walk, I would be happy to be shown the footpaths in the area!

As I write, the churches have been closed again for public worship, but they do remain open for private prayer at the advertised days and times used in the last lockdown. Also, the Archbishops are planning a National Day of Prayer each Thursday for the lockdown period, if not longer. Information will appear on the Church of England website before Thursday 5<sup>th</sup> November. <https://www.churchofengland.org/>

Within the Benefice, we are intending to use Zoom to meet for worship online each Sunday; the joining information will be on our website and on our weekly Pews News. The services will also be livestreamed to our Facebook page <https://www.facebook.com/astwellbenefice> and will be available for viewing there if you cannot join us at the advertised times.

We are still in such uncertain times, and the pandemic does not seem to want to go away any time soon – so there are many upheavals in our lives as we get used to new ways of living and mourn the loss of many social events that cannot currently be held. As some of you will be aware, my life was also turned upside down when my husband Jon died suddenly in June, changing all my plans and hopes for the future together in our new venture. However, whatever the world throws at us, in the

end all we can do is pick ourselves up, dust ourselves down and try to map out a life for ourselves. Easier said than done, I know, but I have managed to draw some strength from a daily prayer time, and I recommend it to you, even if you just light a candle and sit quietly for a short while. Below is a prayer for God's help you may think of using:

O Lord our God,  
source of all goodness and love,  
accept the fervent prayers of your people;  
in the multitude of your mercies look with compassion  
upon all who turn to you for help;  
for you are gracious, O lover of souls,  
and to you we give glory, Father, Son, and Holy Spirit,  
now and for ever. Amen.

God Bless, Revd Diane

## **FROM WAPPENHAM CHAPEL**

### **Heaven**

Have you ever noticed that everyone is an optimist when it comes to the question of heaven? You might be the most outspoken atheist ever known, but somehow when your family lay you to rest they will probably comfort themselves with the thought that "heaven has gained an angel"!



But what is heaven? And what will it be like? The Bible very often uses symbolic language to describe it. The glory of heaven is so great that we can only begin to understand it when we think in terms of pictures and metaphors. Even then, we are left



with a sense of wonder and amazement and even self-abasement. But the most common way in which it is described in the Bible is very simple indeed. Time and time again heaven is spoken of in terms of being “**with Christ**”.

The night before He was crucified, Jesus comforted his disciples by speaking of heaven and said, “*I will come again and will take you **to myself**, that where I am you may be also*” (John 14:3). Later that same night Jesus prayed for His disciples, “*Father, I desire that they also, whom you have given me, may be **with me** where I am....*” (John 17:24). The next day He told the thief on the cross, “*Today, you will be **with me** in paradise*” (Luke 23:43). The apostle Paul spoke of his longing for heaven with the words, “*For I desire to depart and be **with Christ** which is far better*” (Philippians 1:23). He also said that Christ died for the profound reason that “*we might live **with Him***” (1 Thessalonians 5:10).

If it is true, then, that heaven is to be “with Christ” then, for the believer, heaven is something that begins on earth. C. H. Spurgeon once wrote, “*If we don’t get to heaven before we die, we shall never get there afterwards*”. Of another great preacher, Richard Sibbs, it was said, “*Heaven was in him long before he was in heaven*”. A great compliment indeed. But that can also be said of every true believer. In fact, if we don’t know



anything of being with Christ, whatever else we may have, we have no really valid expectation of heaven when we die.

This is never more apparent than at Christmas time. Just as there was no room for Him at the Inn when He was born, for the vast majority of people there is still no room for Him in their hearts and lives either. We want the tinsel and

gifts and tree and the turkey. Perhaps we have room for the star and the wise men and the manger. But for Christ there is still no room in our lives. And yet we remain the eternal optimist! We get offended if anyone should suggest that we might not be going to heaven but our rejection of Christ is clear. We are self-condemned. To be without Christ in this world is to be without God and without hope as well (Ephesians 2:12).

But the coming of Jesus at Bethlehem is a message of hope. The gospel is an invitation to believe and receive the Lord Jesus. One lesser-known Christmas carol speaks of His birth in the manger and then ends each verse with the words, "O come to my heart Lord Jesus! There is room in my heart for Thee". I wonder if you have room in your heart for Him.

### **Chapel Life**

**Sunday mornings: 10.30am. During lockdown we meet on YouTube. Otherwise in Wappenham chapel.**

**Sunday Evenings 5pm –** We meet for prayer at Wappenham chapel or on-line.

**Tuesday Evening Bible Study 7.30pm. These meetings are currently held on Cisco Webex online.**

**There will be no fortnightly ladies meetings until lockdown rules allow.**

[www.towcesterevangelicalchurch.uk](http://www.towcesterevangelicalchurch.uk)

Pastor Trevor T

## WAPPENHAM MEMORIES: CORONATION, 2<sup>ND</sup> JUNE 1953

When the date of the coronation was arranged, several people gave a lot of thought to the preparation of the day.

First of all, on the evening of 8<sup>th</sup> May 1953, an event was held in the School (now the village hall) to select the Coronation Queen. Quite a number of girls took part by parading around the room in front of the judge, who was Mrs Dennis (later Richards) from Lois Weedon.

I was chosen as Queen and Mrs Dennis presented me with a pearl necklace. Joan Peart (later Brian's sister) was chosen with me, and also Jean Chester who lived at the Bull Inn.



My gown and crown were beautifully made by Mrs Gasson who lived in the cottage near the School where Mr Tucker now lives. My dress was the wedding dress, borrowed from Richard and Sue Wilson's aunt, who lived opposite my home at the Beeches. Weather-wise the day was disappointing – damp and not very warm travelling around the village on a tractor and trailer! The bouquets presented to us were really beautiful (red, white and blue).

Quite a number of the men took part in the fancy dress – see photo.



On our trip around the village we visited the elderly and housebound.

Later in the day, a party was held in the barn (now houses) opposite the Tucker's cottage.



On this photo on the left side is Mrs Marlow (Eileen Robbins' mother) and on the right is David Wilson's grandmother.

A united service, for the Coronation of Her Majesty the Queen, was held at Syresham and Wappenham on 2<sup>nd</sup> June 1953. I am sure everyone in the country, and our own village, will remember a very special day.

Rita H



***Coronation Banner painted by Mrs Kaye***

**Exerpt from the villages' Coronation service:**

The Minister:

*"May her reign be long and prosperous..."*

Psalm 121: "I will lift up mine eyes unto the hills, from whence cometh my help."

The Minister, in a prayer for the Queen and Royal Family:

*“O Lord and Heavenly Father, sanctify thy chosen servant Elizabeth ... strengthen her ..with the Holy Ghost, the Comforter, confirm and establish her with.. the Spirit of wisdom and government, the Spirit of counsel and might, the Spirit of knowledge and true godliness..... grant that her people may dwell in peace and righteousness.”*

A prayer for the Parish:

*“Almighty God from whom all good things do come, give unto us we pray the love of justice and right, of wisdom and charity; make kindness and good neighbourhood to prevail amongst us, that seeking not our own but the good of all, we may advance thy Kingdom here upon earth and set forward our true welfare; through Jesus Christ our Lord, Amen.”*

## **WAPPENHAM WILDFLOWERS**

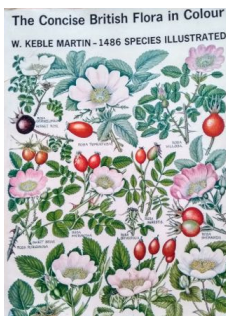
This was the year I became obsessed with wildflowers on my daily walks. I have been walking the same ways since I came here 25 years ago, so I sometimes get jaded with the same (beautiful) views, especially if it's a dull grey day. I started counting how many different wild flowers I could see, and it became an addiction!



I have rules: ‘escapes’ from nearby gardens don’t count but flowers on wild shrubs and trees like ivy and hawthorn do. In June I can count over 30, on a walk to just beyond the Hall from Highbridge Road. Even in November, there are about 10-12: holly, ivy, 2 kinds of hawkweed, purple deadnettle, shepherd’s purse, field poppy, dandelion, daisy and the ever present groundsel. I also count things like plantain flowers and

nettle flowers. But not grasses, as I don't know enough and there are too many - I'd never get to where I was going!

What I've learnt is which plants like dry situations – a sort of persicaria or bistort; chamomile, and plantains, which flourish at the edge of a patch of grass. And other plants prefer a wetter grass meadow, like hawkweed, buttercup and ladies' bedstraw.



I've counted over 60 types of wild flower in the Parish in all, flowering at different times. One day when I retire I will put a list up on the website. I refer to the 'Concise British Flora', now probably out of print, when I don't know the names. It has great illustrations, carefully painted by the author, a vicar, who researched the book on his summer holidays.

I'm grateful to my mother for teaching me the names of wild flowers. Do children still learn these? There's a whole world of flowers out there to learn about.

*Jane Harries*

## **VOLUNTEER DRIVERS URGENTLY NEEDED IN YOUR AREA**



Could you volunteer to help the elderly and vulnerable in our parish? If you have been volunteering during lockdown or are now working from home, are you able to spare some time to help out?

Towcester Area Door to Door urgently need to recruit additional volunteer drivers to help people in our community. As we emerge from lockdown, the NHS is now offering a wider range of hospital and GP appointments, and dentists, opticians, podiatrists and other healthcare providers are back at work. We

have seen a steady rise in the number of journeys requested and we expect this to continue, particularly when the autumn flu vaccine programme begins.

This year, more than ever, our elderly and vulnerable neighbours need the support of a friendly, affordable, door-to-door service for their medical appointments. Drivers need to have access to a car, be available on a regular basis for a minimum of half a day a week and complete a DBS check. Mileage is reimbursed at the HMRC rate and insurance premiums are not affected. Journeys are agreed in accordance with weekly availability and can fit around the school run, working from home or part time employment.

To learn more about volunteering for TADD, visit [www.towcesterareadoor2door.com](http://www.towcesterareadoor2door.com) or email

**[volunteer@towcesterareadoor2door.co.uk](mailto:volunteer@towcesterareadoor2door.co.uk)**

**Tel. 01327 810300**

## **DOORSTEP CAROLS ON DECEMBER 16<sup>TH</sup> 6PM**

The people of Shropshire have started something! They said: *“Join us on your doorsteps across the nation this Christmas to sing carols together and spread some much-needed cheer!”*

The idea is: at 6pm on Wednesday 16th December, all of the participating radio stations in the UK, including Radio Northampton, will broadcast the same popular carols, and people in the area can come out to their doorsteps and join in a national carol service in aid of charity.

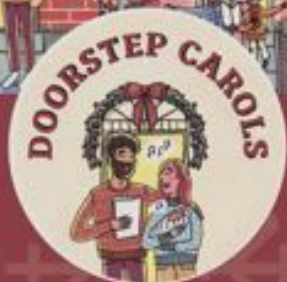
See the poster overleaf for more details. *Jane Harries*





# You're invited!

Wednesday 16th December, 6pm  
& Thursday 24th December, 6pm\*



## DOWNLOAD

Visit the website [doorstepcarols.co.uk](http://doorstepcarols.co.uk)  
and download the words.



## TUNE IN

The carols will be broadcast on your local BBC Radio  
station to help us all stay in time and in tune.  
(\* Via replay through BBC Sounds on the 24th Dec)



## SING

Simply sing along on the night, in household  
bubbles only - Help us spread the word with your  
neighbours!

Raising money for local charities  
[www.doorstepcarols.co.uk](http://www.doorstepcarols.co.uk)





Fresh Premium Grade Christmas Trees

Pre-Order your local Free-Range Turkey

Luxury Gift Hampers

Christmas Decorations & Festive Homeware

**BELL PLANTATION GARDEN CENTRE**

Watling Street, Towcester NN12 6GX  
Tel: 01327 354126 Email: [enquiries@bellplantation.co.uk](mailto:enquiries@bellplantation.co.uk) [WWW.BELLPLANTATION.CO.UK](http://WWW.BELLPLANTATION.CO.UK)



# Towcester VETS



## Trust Towcester Vets

We understand that your animals are family members, friends and, for some, your livelihood.

For over a century we have provided veterinary care in the local community and have now developed extensive facilities across Northamptonshire and Warwickshire.



Small Animal & Farm  
Tel: 01327 350239 | [admin@towcestervets.co.uk](mailto:admin@towcestervets.co.uk)

Equine  
Tel: 01327 811007 | [reception@towcesterequine.co.uk](mailto:reception@towcesterequine.co.uk)

Follow us on social media  
[www.towcester-vets.co.uk](http://www.towcester-vets.co.uk)



SMITHS NEWSAGENTS

# Newspapers And Magazines Delivered To Your Door

**Tel: 01295 268499**  
**info@smithsnewsagents.co.uk**

**APL**  
EXECUTIVE CARS

BOOK NOW BY CALLING  
**0740 118 1811**

24 HOURS A DAY, 7 DAYS A WEEK  
or email: [aplowe@hotmail.co.uk](mailto:aplowe@hotmail.co.uk)

WE SPECIALISE IN:

AIRPORT TRANSFERS / THEATRE CHAUFFEURING  
SOCIAL NIGHTS OUT / CORPORATE BOOKINGS  
LONDON TRIPS / PRIVATE HIRE

ONE WAY AIRPORT RATES:

BIRMINGHAM - from £70

HEATHROW - from £75

LUTON - from £70

GATWICK - from £115

STANSTED - from £115

EAST MIDLANDS - from £75



Visit our website for more details of our services  
**www.aplexecutivecars.co.uk**

All major Credit & Debit card payments accepted, including AMEX, Visa, Mastercard

*lawrence furnishings*  
RE-UPHOLSTERY CURTAINS

FAMILY BUSINESS  
TRADING SINCE 1978

WORKSHOP WITH SMALL  
TEAM OF FULLY QUALIFIED  
PROFESSIONAL CRAFTSMEN

FREE HOME VISITS WITH  
DETAILED QUOTATIONS

COMPLIMENTARY  
INTERIOR DESIGN

SHOWROOM WITH  
INSPIRING FABRICS



**01280 704 437**

8d Boundary Road Brackley NN13 7ES

[www.lawrencefurnishings.co.uk](http://www.lawrencefurnishings.co.uk) • [info@lawrencefurnishings.co.uk](mailto:info@lawrencefurnishings.co.uk)

## Advertisers:

The newsletter offers you  
**reduced yearly rates** for 4  
consecutive issues.

### Yearly rates

One page, 4 issues: £185

Half page: £90

Quarter page: £45

### Single issue rates

One page: £50

Half page: £25

Quarter page: £12.50

Email

[jane.harries@wappenham.net](mailto:jane.harries@wappenham.net)  
for details.



# SYRESHAM GENERAL STORES & POST OFFICE

Phone: 01280 850210, Fax: 01280 850747

**As well as selling groceries, newspapers & magazines we carry out:**

Photocopying, Laminating (up to A4), Faxing  
Dry Cleaning, Shoe Repairs, Shoe Recycling  
Mobile Phone Top-ups, Euro's on demand  
Avon products can be ordered from Ruth.  
Greeting Cards & Wrapping Paper are stocked.  
**Opening hours 7:30am to 6:00pm Mon-Fri,**

**8:00am to 1:00pm Sat.**

**Proprietor: Ruth Mary Grovell**

## AVON CATALOGUES

Would anyone like to  
browse through the latest  
Avon catalogue? If so,

**Contact**

**Penny Spademan**

**On 07495 156780**

**Or email:**

**penelopespademan @  
icloud.com**



x

## GUITAR LESSONS

SUITABLE FROM 6 - 106 YEARS OF AGE



**ELECTRIC • ACOUSTIC • CLASSICAL • BASS**



Lessons conducted:

Face to face

(in a covid safe environment)

Online via Zoom,

Skype or Facetime

**CALL DAVID TAYLOR ON 07738 974220**





is delighted to announce that its new  
custom-built GP practice will open in  
**Wellington Road, Brackley**  
on

**Monday 16 November 2020**

*Washington House Surgery and Brackley Health Centre  
will be closed for appointments from this date.*

The new site will also be home to **Lowick Pharmacy**  
and the new **Brackley Community Hospital**.



**Wellington Road, Brackley NN13 6QZ**

**Tel 01280 702436**

**[www.brackleymedicalcentre.co.uk](http://www.brackleymedicalcentre.co.uk)**

## What's on this winter

**For help** with groceries, chemists etc if you are self-isolating:

Contact your road's volunteer (on the form dropped through your door) or call Fiona who is the coordinator.

**New! 'Smiths General Stores at the New Inn', Abthorpe**, for groceries, fruit & veg, meat, fresh fish & seafood, pub-cooked ready meals and drinks. Open Mon-Fri 8.30am-7pm, Sat 8.30am-5.30pm and Sunday 10am-5.30pm, until pubs can open normally  
16<sup>th</sup> December 6-7pm **Doorstep Carol Service**– see poster inside for details.

### Regular Events –

*Mumford's butcher/grocery van* Meat, fruit, veg & groceries. Delivers Sat around 3pm. Order on 01295 760212

*Dave's Fish* Every Thursday 07886 553229

*Duncombes* Fresh fruit and veg, call 01295 768231 to order; collect from Helmdon

*Takeaway food* Tues-Fridays, also hot food Weds-Sats, roasts on Sunday - New Inn/Kings Head, delivered, call 01280 630010

*Wholefood and specialist foods* Daily Bread - free delivery to Wappenham every two months, email Jane via [parishclerk@wappenham.net](mailto:parishclerk@wappenham.net).

*Chapel service* Sundays 10.30am (Chapel and online)

*Chapel service* Sundays 5pm (Chapel and online)

*Bible Study* Tuesdays 7.30pm (Currently held online by Chapel)

*Space for private prayer* 10am – 3pm (St Mary's church) – See Wiz, Astwell benefice website and church noticeboard for St Mary's services